

Under-table cross-cut saws

UTK 350
UTK 450
UTK 500
UTK 600



Technical Specifications	UTK 350	UTK 450	UTK500	UTK 600
Maximum cutting height	100 mm	115 mm	140 mm	200 mm
Maximum cutting width	230 mm	340 mm	390 mm	800 mm
Circular saw blade	Ø 350 mm	Ø 450 mm	Ø 500 mm	Ø 600 mm
Saw blade bore	Ø 30 mm	Ø 30 mm	Ø 30 mm	Ø 35 mm
Saw motor (standard)	2.2 kW / 3 HP	3 kW / 4 HP	5.5 kW / 7.5 HP	7.5 kW / 10 HP
Saw motor (option)	3 kW / 4 HP	-	7.5 kW / 10 HP	-
Protection class	IP 54	IP 54	IP 54	IP 54
Saw blade speed	3800 rpm	2900 rpm	2800 rpm	2800 rpm
Lifting speed	13 - 375 mm/s (infinitely variable)			
Air consumption per sawing cycle	approx. 5 L	approx. 8 L	approx. 8 L	approx. 20 L
Operating pressure	7 - 8 bar	7 - 8 bar	7 - 8 bar	7 - 8 bar
Electrical voltage	400 V / 50 Hz / 3 phases			
Phases to be connected	L1 L2 L3 N PE			
On-site fuse protection	16 A slow	16 A slow	20 A slow	25 A slow
Supply cable	Cu, 5-core. The cross-section must be determined on site by a qualified electrician!			
Suction nozzle (Ø in mm)	2 x Ø 100	1 x Ø 100 + 1 x Ø 120	3 x Ø 100	1 x Ø 100 + 2 x Ø 120
Recommended total connection	Ø 140 mm	Ø 160 mm	Ø 160 mm	Ø 200 mm
Min. air flow at 20 m/s	1.110 m³/h	1.440 m³/h	1.440 m³/h	2.260 m³/h
Air velocity	min. 20 m/s (at the connection)			
Negative pressure	approx. 1.200 Pa bei 20 m/s (at the connection)			
Dimensions	see ⇨ next page			
Weight	approx. 200 kg	approx. 250 kg	approx. 400 kg	approx. 520 kg



- Caution: The regulations of the local power supply company apply.
- Checking the impedance of the fault loop and the suitability of the overcurrent protection devices must be carried out at the installation site of the machine.
- The electrical connection may only be carried out by an authorised electrician.
- The circuit diagram can be found in the control cabinet of the machine.

Noise Emission Values acc. to EN 1870-10

Uncertainty allowance K = 4 dB(A)

Sound power level (UTK 600):	idle: 98 dB(A) machining: 104 dB(A)
Workplace-related emission levels (UTK 600):	idle: 83 dB(A) machining: 89 dB(A)

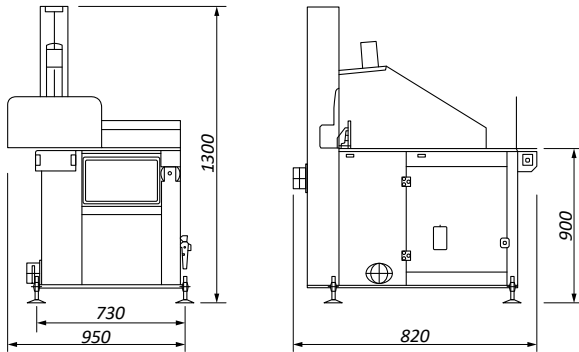
If the machine is correctly connected to a sufficiently powerful extraction system (air speed min. 20 m/s in the overall connection), it can be assumed that the 2.0 mg/m³ limit value for wood dust at the workplaces will be permanently complied with.



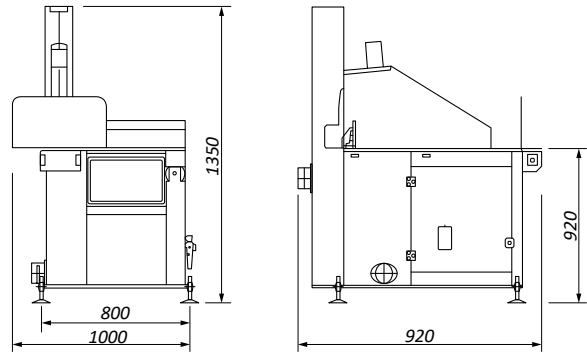
The noise emission values of the machine partly exceed 85 dB(A)!
Therefore, suitable hearing protection must be provided to the personnel!

Dimensions and Working Areas

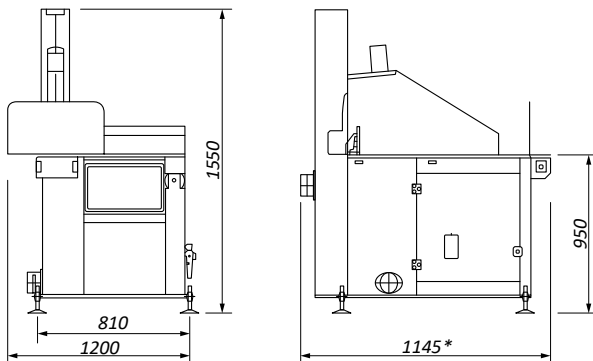
Dimensions UTK 350:



Dimensions UTK 450:

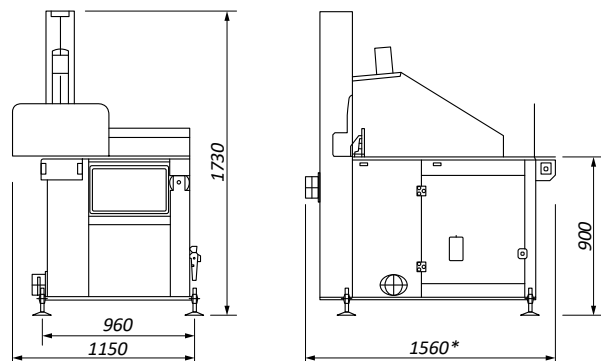


Dimensions UTK 500:



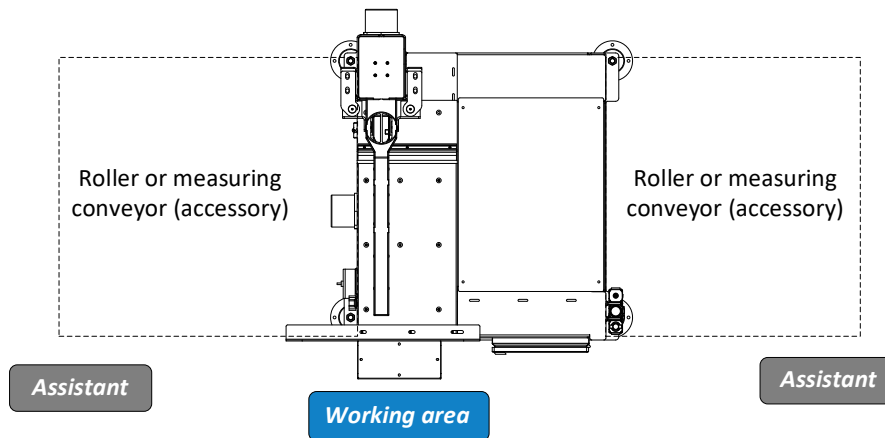
*) 1335 Mm with pneumatic protection shield (option)

Dimensions UTK 600:



*) 1660 mm with pneumatic protection shield (option)

Working Areas:



Optional: Suitable roller and measuring conveyors see <https://beck-maschinenbau.com/en/products/roller-measuring-conveyors/>

Effective space requirement:

The effective space requirement depends on the external dimensions of the machine and the dimensions of the workpieces to be processed. Generally provide sufficient space around the machine and also calculate the space required for adjustment, repair and maintenance work, the operating and auxiliary personnel as well as for feeding and removal of long workpieces.

Based on the external dimensions of the machine, the possible workpiece dimensions as well as the calculated space for feeding and removing the workpieces, a free space of at least 1.0 m must be ensured around the machine (including additional work tables resp. roller resp. measuring conveyors).

Reinhold Beck Maschinenbau GmbH

Im Grund 23 | DE -72505 Krauchenwies (Germany)

Phone: +49 (0) 7576 / 962 978 - 0 | Fax: +49 (0) 7576 / 962 978 - 90

E-Mail: info@beck-maschinenbau.de | Web: <https://www.beck-maschinenbau.de>